

RS/LB/RL

RATCHET, REVOLUTION AND DIRECT DRIVE COUNTER

■ RATCHET COUNTER

Adds 1 count for each 40°~ 45° actuation of lever.
Count Speed: 200 ~ 500 counts / minute


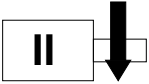
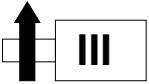
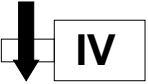
■ REVOLUTION COUNTER

Adds 1 count for every complete revolution of the shaft.
Count Speed: 600 revolutions / minute

■ DIRECT DRIVE COUNTER

Adds 10 counts for every complete revolution (1 count / 1/10 shaft revolution) of the shaft.
Count Speed: 100 revolutions / minute

■ COUNT DIRECTION / SHAFT POSITION

| | | | |
|---|---|---|--|
|  |  |  |  |
| RIGHT SHAFT TOP GOING | RIGHT SHAFT TOP COMING | LEFT SHAFT TOP GOING | LEFT SHAFT TOP COMING |

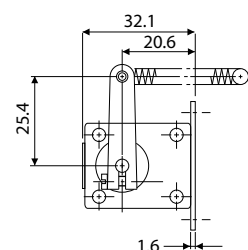
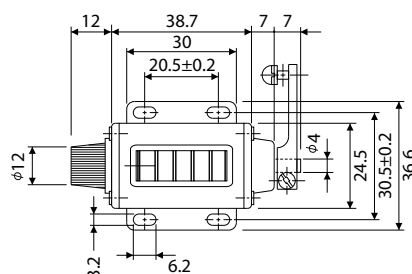
■ MODEL SELECTION

| TYPE | DIGITS | FIGURES (mm) | WEIGHT(g) | TYPE (I) | TYPE (II) | TYPE (III) | |
|--------------|--------|--------------|-------------------|--------------|---------------|-----------------|----------------|
| RATCHET | 5 | 4.8 x 2.4 | 60 | RS-204-5 (I) | RS-204-5 (II) | RSL-204-5 (III) | RSL-204-5 (IV) |
| | 4 | 4.4 x 2.8 | 50 | RS-4 (I) | — | — | — |
| | 5 | | (I) 50 / (II) 105 | RS-5 (I) | RS-5 (II) | — | — |
| | 6 | | 115 | RS-6 (I) | — | — | — |
| | 5 | 6.0 x 4.5 | 120 | RS-303-5 (I) | — | — | — |
| REVOLUTION | 4 | 4.4 x 2.8 | 90 | LB-4 (I) | — | — | — |
| | 5 | | 100 | LB-5 (I) | — | — | — |
| DIRECT DRIVE | 4 | 4.4 x 2.8 | 90 | RL-4 (I) | — | — | — |
| | 5 | | 100 | RL-5 (I) | — | — | — |
| | 5 | 6.0 x 4.5 | 110 | RL-219-5 (I) | — | — | — |

| | | | | | |
|-----------------------|--------------|--------------------|---------------|---------|------------------------------|
| Operating Temperature | -5°C - +40°C | Operating Humidity | 85%RH maximum | Remarks | Non-Freezing, Non-Condensing |
|-----------------------|--------------|--------------------|---------------|---------|------------------------------|

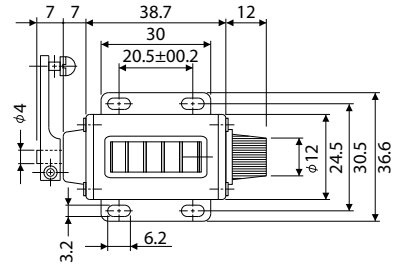
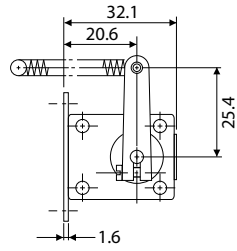
■ DIMENSIONS

RS-204-5 (I)
RS-204-5 (II)

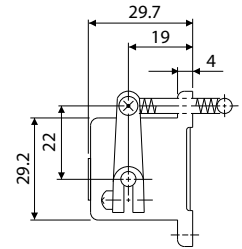
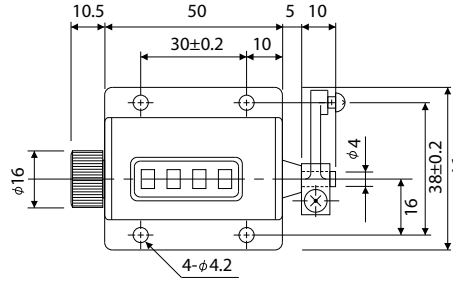


DIMENSIONS

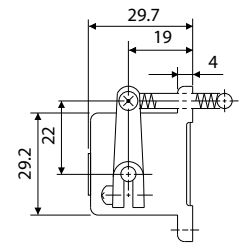
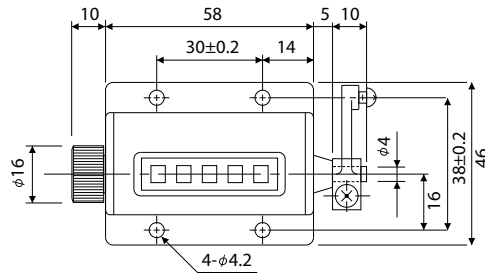
RSL-204-5 (III)
RSL-204-5 (IV)



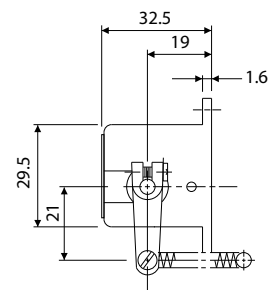
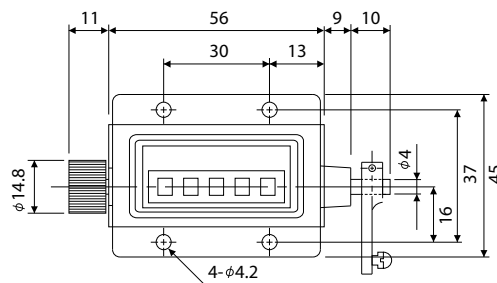
RS-4 (I)



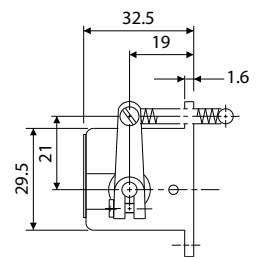
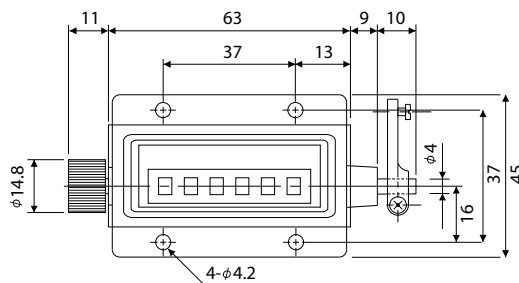
RS-5 (I)



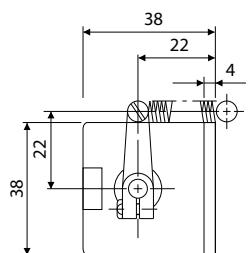
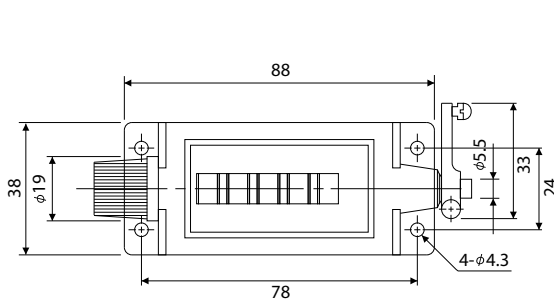
RS-5 (II)



RS-6 (I)

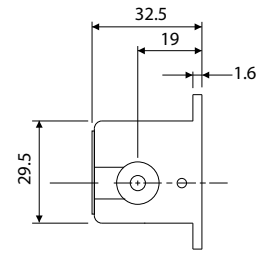
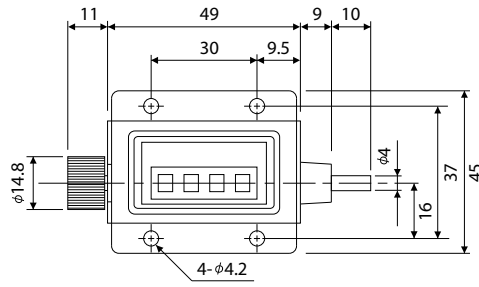


RS-303-5 (I)

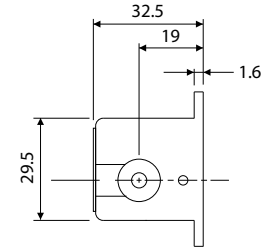
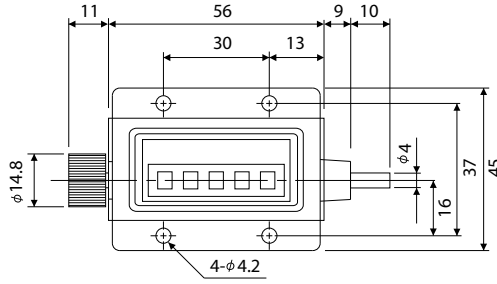


DIMENSIONS

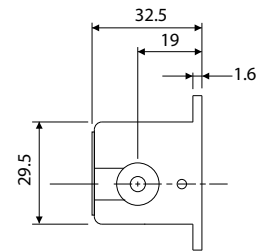
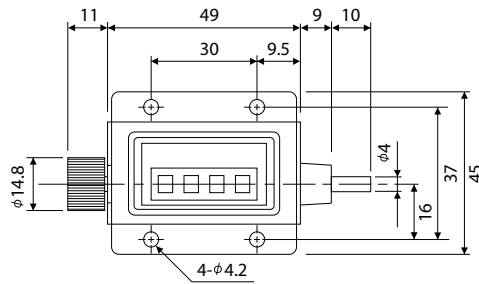
LB-4 (I)



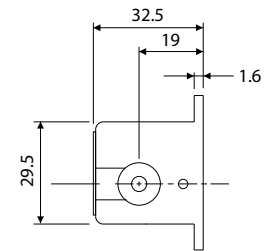
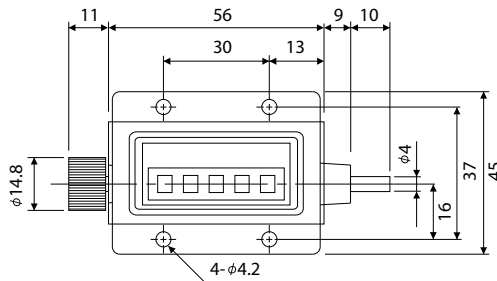
LB-5 (I)



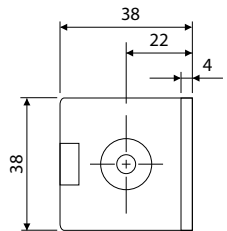
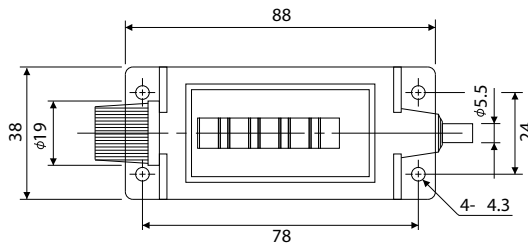
RL-4 (I)



RL-5 (I)



RL-219-5 (I)



This catalog was last revised Jul. 14, 2016.

*Subject to change without prior notice.

All Rights Reserved, Copyright © 2016, LINE SEIKI CO., LTD.



LINE SEIKI CO., LTD.

Address : 37-7, Chuo-Cho, 2-Chome, Meguro-ku
Tokyo 152-0001 JAPAN

Contacts : Tel: +81-3-3716-5151 Fax: +81-3-3710-4552
E-mail: webtrade@line.co.jp

URL : <http://www.linenseiki.com>