

RS/LB/RL

RATCHET, REVOLUTION AND DIRECT DRIVE COUNTER

RATCHET COUNTER

Adds 1 count for each 40°~ 45° actuation of lever.
Count Speed: 200 ~ 500 counts / minute


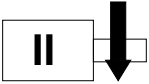
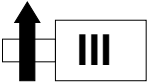
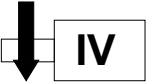
REVOLUTION COUNTER

Adds 1 count for every complete revolution of the shaft.
Count Speed: 600 revolutions / minute

DIRECT DRIVE COUNTER

Adds 10 counts for every complete revolution (1 count / 1/10 shaft revolution) of the shaft.
Count Speed: 100 revolutions / minute

COUNT DIRECTION / SHAFT POSITION

			
RIGHT SHAFT TOP GOING	RIGHT SHAFT TOP COMING	LEFT SHAFT TOP GOING	LEFT SHAFT TOP COMING

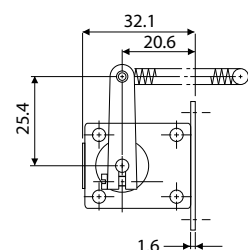
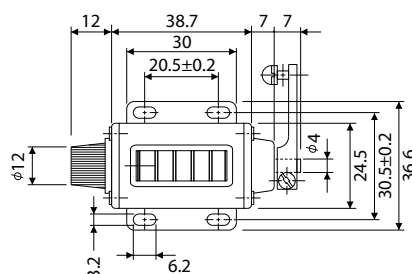
MODEL SELECTION

TYPE	DIGITS	FIGURES (mm)	WEIGHT(g)	TYPE (I)	TYPE (II)	TYPE (III)	
RATCHET	5	4.8 x 2.4	60	RS-204-5 (I)	RS-204-5 (II)	RSL-204-5 (III)	RSL-204-5 (IV)
	4	4.4 x 2.8	50	RS-4 (I)	—	—	—
	5		(I) 50 / (II) 105	RS-5 (I)	RS-5 (II)	—	—
	6		115	RS-6 (I)	—	—	—
	5	6.0 x 4.5	120	RS-303-5 (I)	—	—	—
REVOLUTION	4	4.4 x 2.8	90	LB-4 (I)	—	—	—
	5		100	LB-5 (I)	—	—	—
DIRECT DRIVE	4	4.4 x 2.8	90	RL-4 (I)	—	—	—
	5		100	RL-5 (I)	—	—	—
	5	6.0 x 4.5	110	RL-219-5 (I)	—	—	—

Operating Temperature	-5°C - +40°C	Operating Humidity	85%RH maximum	Remarks	Non-Freezing, Non-Condensing
-----------------------	--------------	--------------------	---------------	---------	------------------------------

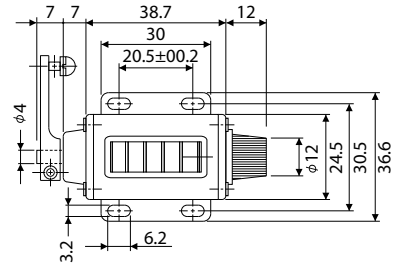
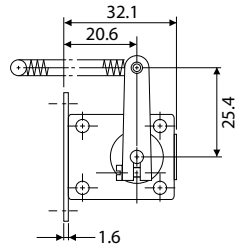
DIMENSIONS

RS-204-5 (I)
RS-204-5 (II)

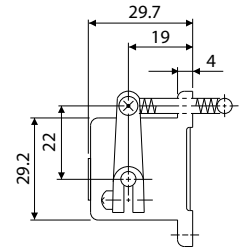
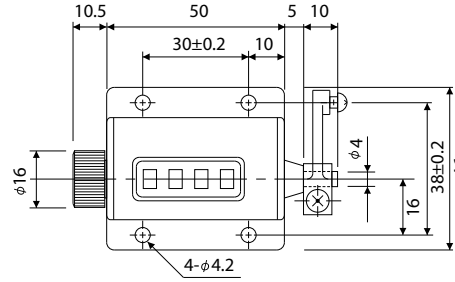


DIMENSIONS

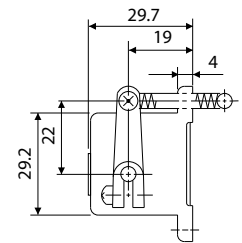
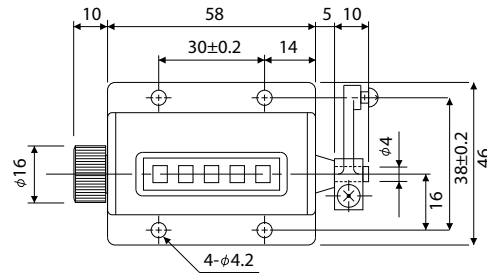
RSL-204-5 (III)
RSL-204-5 (IV)



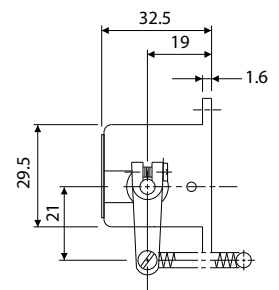
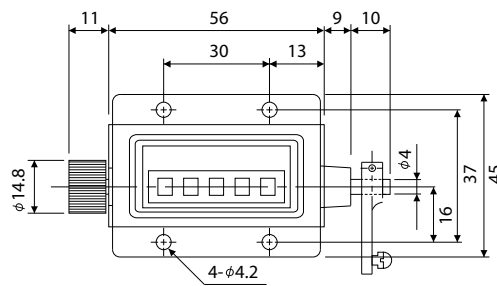
RS-4 (I)



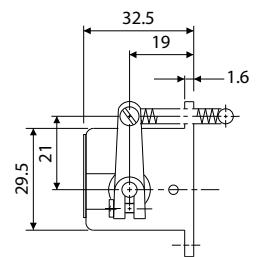
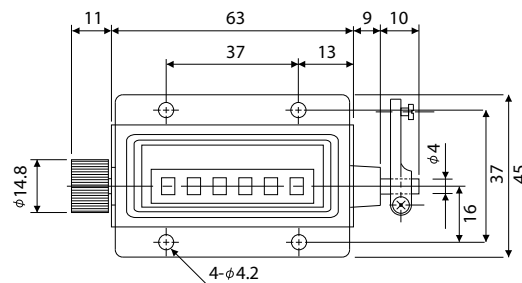
RS-5 (I)



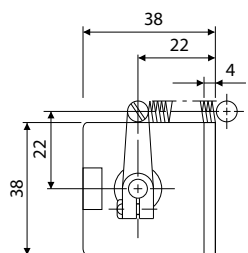
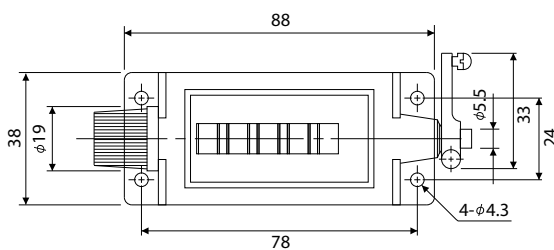
RS-5 (II)



RS-6 (I)

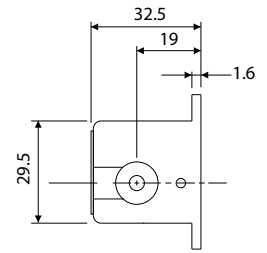
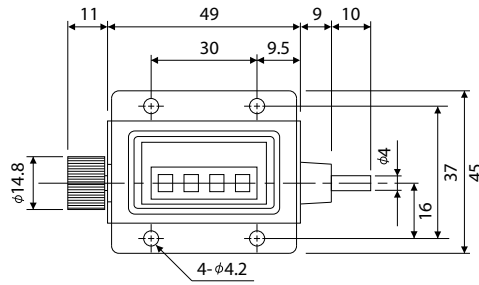


RS-303-5 (I)

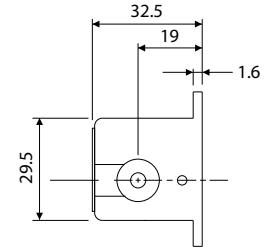
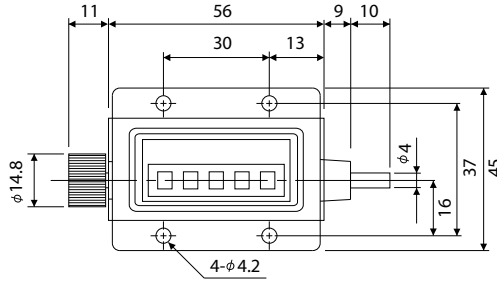


DIMENSIONS

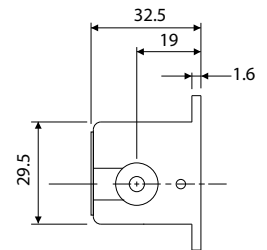
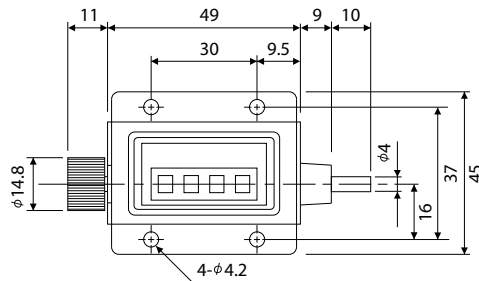
LB-4 (I)



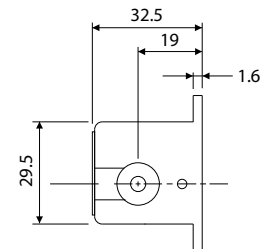
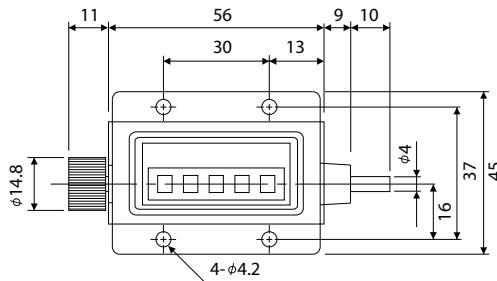
LB-5 (I)



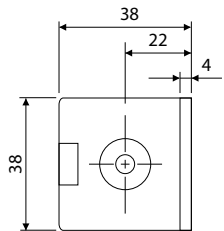
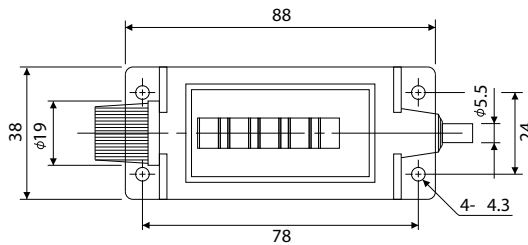
RL-4 (I)



RL-5 (I)



RL-219-5 (I)



This catalog was last revised Jul. 14, 2016.

*Subject to change without prior notice.

All Rights Reserved, Copyright © 2016, LINE SEIKI CO., LTD.



LINE SEIKI CO., LTD.

Address : 37-7, Chuo-Cho, 2-Chome, Meguro-ku
Tokyo 152-0001 JAPAN

Contacts : Tel: +81-3-3716-5151 Fax: +81-3-3710-4552
E-mail: webtrade@line.co.jp

URL : <http://www.linenseiki.com>