

# SL-24A

## SHUT HEIGHT COUNTER ADJUSTING DIE HEIGHT OF PRESS MACHINE BASE MOUNTING



### APPLICATIONS

PRESS MACHINE AND VARIETY OF INDUSTRIAL MACHINES.

### TYPES OF REVOLUTION

Looking from the top of the shaft (looking from the bottom),

( II ) Adds for every clockwise rotation of main shaft (The direction of arrow).

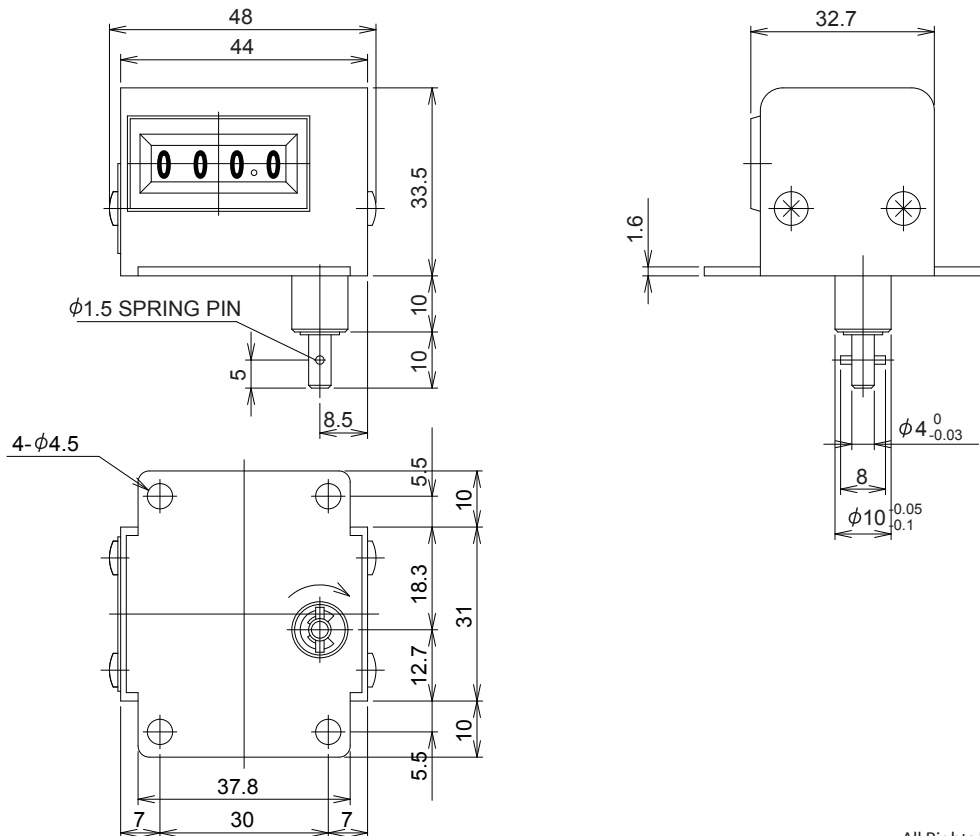
Subtracts for counterclockwise rotation.

### SPECIFICATIONS

Model	Digits	Figure Size	Revolution / Count	Maximum Speed
SL-24A (II)	4	5.0 x 3.5mm	1 / 10	300 rpm

Operating Temperature	-5°C - +40°C	Operating Humidity	85%RH maximum	Remarks	Non-Freezing, Non-Condensing
-----------------------	--------------	--------------------	---------------	---------	------------------------------

### DIMENSIONS



This catalog was last revised Jul. 19, 2012.

\*Subject to change without prior notice.

All Rights Reserved, Copyright © 2012, LINE SEIKI CO., LTD.



**LINE SEIKI CO., LTD.**

Address : 37-7, Chuo-Cho, 2-Chome, Meguro-ku  
Tokyo 152-0001 JAPAN

Contacts : Tel: +81-3-3716-5151 Fax: +81-3-3710-4552

E-mail: [webtrades@line.co.jp](mailto:webtrades@line.co.jp)

URL : <http://www.lineseiki.com>